

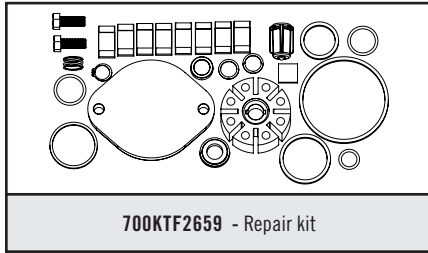
**Replacement Parts Information**

For repairs or routine maintenance, Fill-Rite offers the parts you need. The following parts diagram and list covers all applicable parts for your Fill-Rite product. These parts can be obtained through any authorized Fill-Rite dealer. Be sure to use only genuine Fill-Rite replacement parts for your service and maintenance needs. For a list of authorized dealers, please visit [fillrite.com](http://fillrite.com).

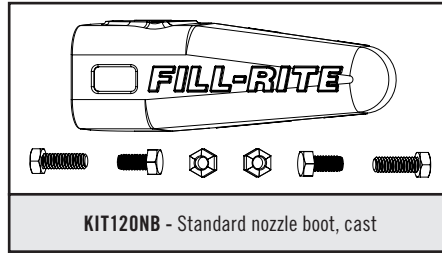


**WARNING**

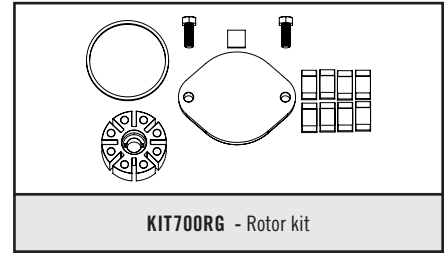
DO NOT open or attempt to repair the motor on your FR300V series pump. Opening the motor case can compromise the integrity of the Explosion Proof construction and will void any existing warranty and certification (UL listing). Please refer to the Warranty Policy located on page 2.



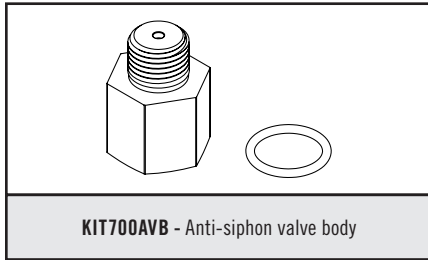
**700KTF2659** - Repair kit



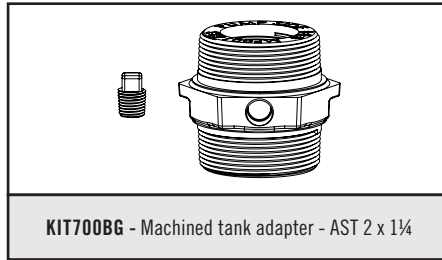
**KIT120NB** - Standard nozzle boot, cast



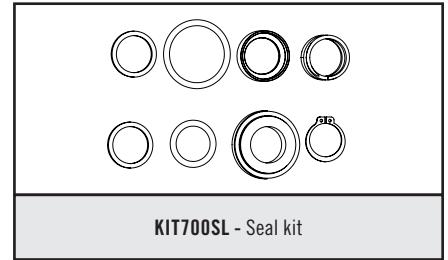
**KIT700RG** - Rotor kit



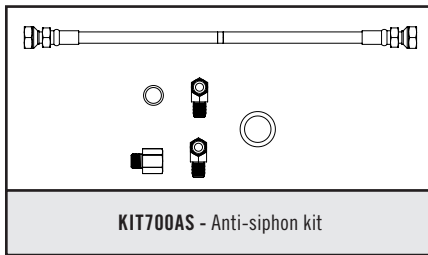
**KIT700AVB** - Anti-siphon valve body



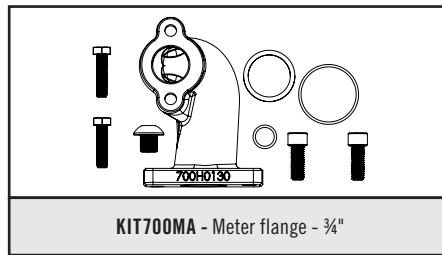
**KIT700BG** - Machined tank adapter - AST 2 x 1/4



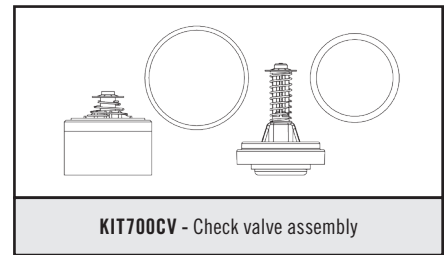
**KIT700SL** - Seal kit



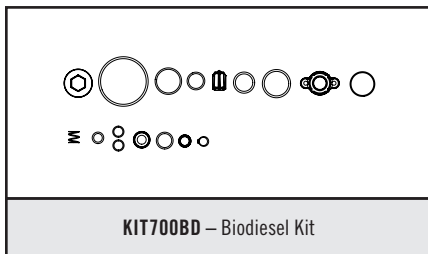
**KIT700AS** - Anti-siphon kit



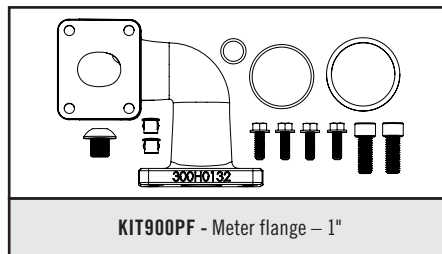
**KIT700MA** - Meter flange - 3/4"



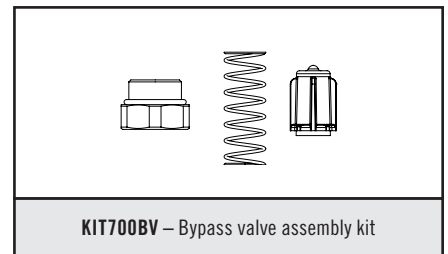
**KIT700CV** - Check valve assembly



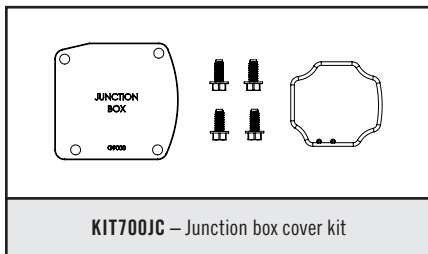
**KIT700BD** - Biodiesel Kit



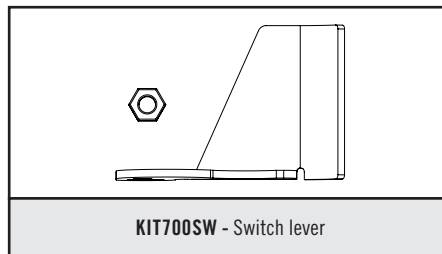
**KIT900PF** - Meter flange - 1"



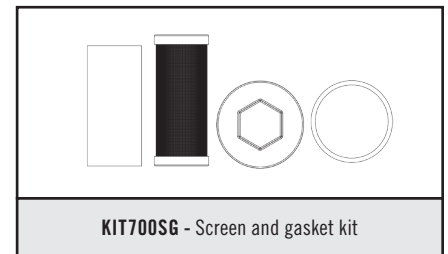
**KIT700BV** - Bypass valve assembly kit



**KIT700JC** - Junction box cover kit



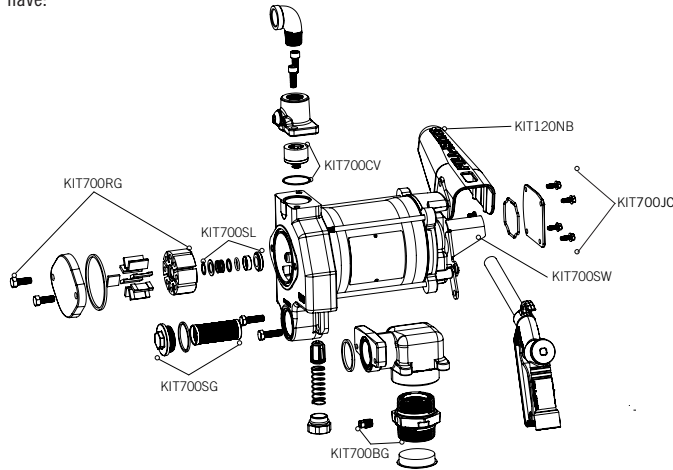
**KIT700SW** - Switch lever



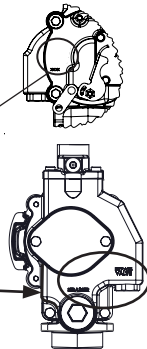
**KIT700SG** - Screen and gasket kit

**FR700V / FR701V / FR710V / FR711V Parts List**

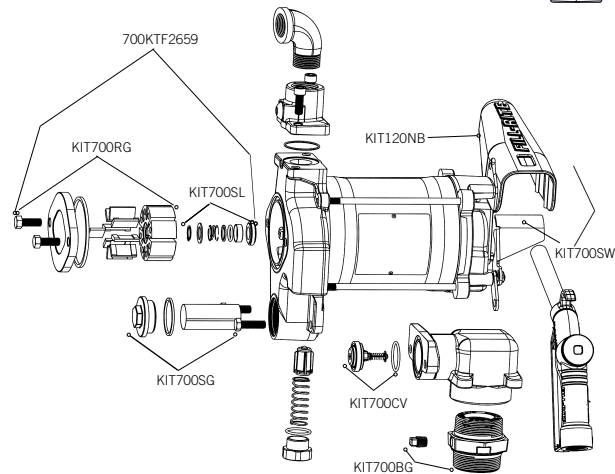
Please review the following visual indicators to determine which FR700V Series model you have:



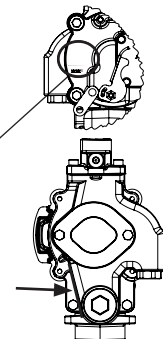
Examine the casting on the side of the pump containing the switch and nozzle boot. There will be an emblem etched into the casting. Underneath the casting, you will see a date code. If the date code is only 4 characters or numbers long, you have the older design.



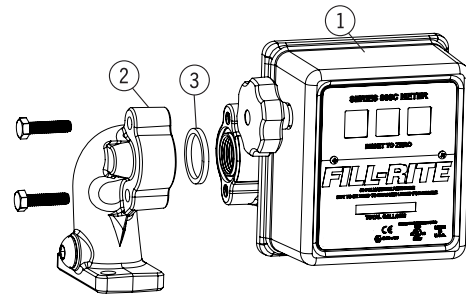
Additionally, on the other side of the pump, the cast iron pump housing is not angled and contain the words "Strainer" and "Bypass Valve" etched directly into the casting. If your pump matches these descriptions, the check valve is located on the outlet side of your pump. It will also utilize the longer of the two strainer assemblies available in KIT700SG.



Examine the casting on the side of the pump containing the switch and nozzle boot. There will be an emblem etched into the casting. Underneath the casting, you will see a date code. If the date code is 5 characters long and ends in the letter "B", you have the new design.



Additionally, on the other side of the pump, the cast iron pump housing has angled edges and does not contain any words etched into the casting. If your pump matches these descriptions, the check valve is located on the inlet side of your pump. It will utilize the shorter of the two strainer assemblies available in KIT700SG.



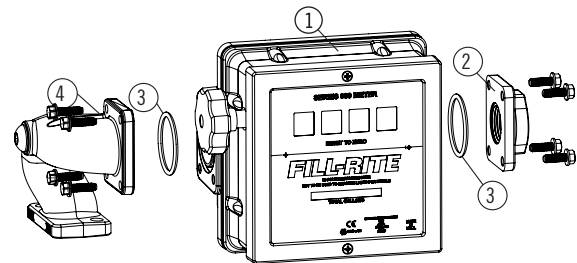
**FR701V Parts List**

The FR701V configuration adds a 807C Series mechanical meter, inlet meter flange, outlet meter flange, the associated attaching hardware, and gaskets. This package is available in gallon or liter register.

No.	Part / Kit #	Description	Qty.
1	807C	807C Meter (Gallon)	1
2	701H0934	Meter Flange	1
3		Gasket, Lathe Cut, Nitrile	1
1	807CL	807CL Meter (Liter)	1

**FR710V Parts**

No.	Part / Kit #	Description	Qty.
1	700H0128	1" Outlet Flange	1



**FR711V Parts List**

The FR711V configuration adds a 901C Series mechanical meter, inlet meter flange, outlet meter flange, the associated attaching hardware, and gaskets. This package is available in gallon or liter register.

No.	Gallon Kit Number	Description	Liter Kit Number	Qty.
1	901C	901C Meter (Gallons)	--	1
2	901CMK300V	Meter Flange	900 Meter	1
3		Meter Gasket	(Liter) Kit #	2
4		1" Meter Fitting	901CLMK300V	1
1	--	901CL Meter (Liters)	901CL	1